

# FILL-RITE®

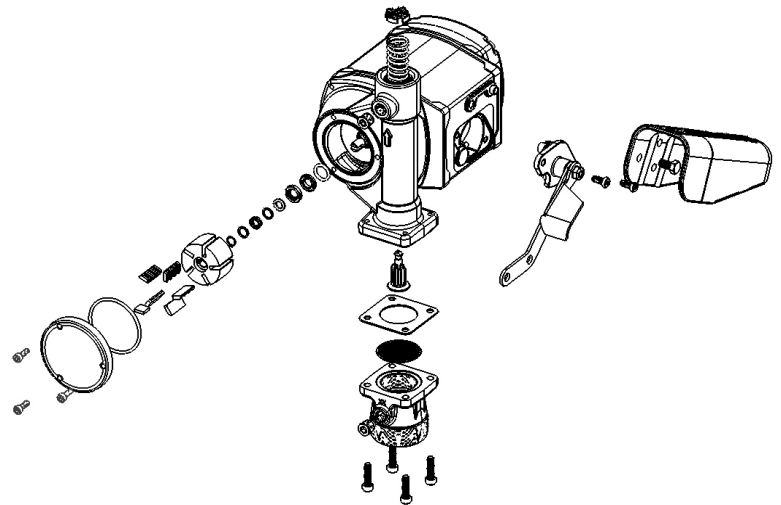
A GORMAN-RUPP COMPANY



## NX25-DDC SERIES TECHNICAL SPECIFICATIONS

### Motor

Power - DC 12, 24, 12/24	12 to 24 VDC
HP (Horsepower) Rating	1/3 HP
Power Cord Length	20'
Power Cord Gauge (AWG)	10 AWG
DC Power Cord Connectors	Clips not included
Amps (FLA)	30 - 15
RPM	Variable 400 - 3500
Duty Cycle	Continuous for fuel transfer
Thermal Protection	Electronically Protected
Circuit Protection Fuse	Yes (35 AMP)
Certifications	UL/cUL Listed, ATEX, IECEx, CE



### Pump

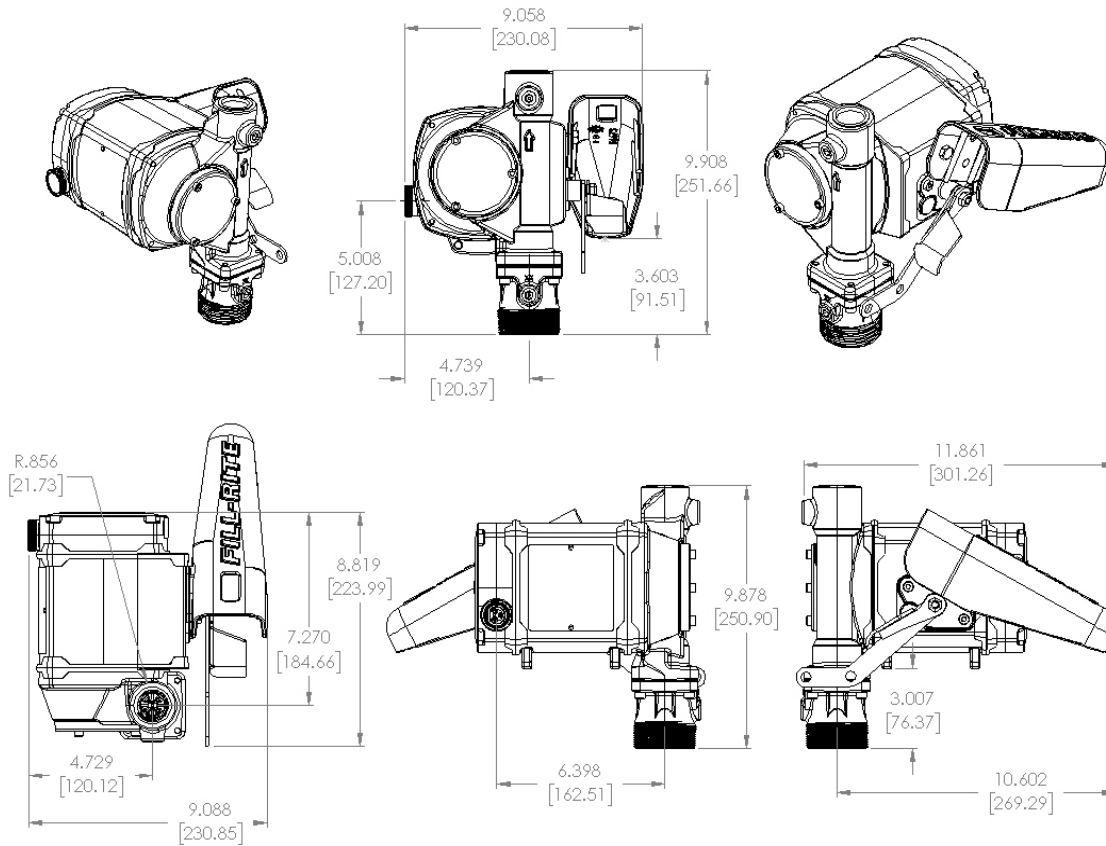
Type / Design	Rotary Vane
GPM in Supplied Configuration	25 GPM / 95 LPM*
GPM Open Flow - no Hose or Nozzle	28 GPM / 106 LPM*
By-Pass Pressure Rating (PSI) - Max	21 PSI
Dry Vac (in Hg)	11
Head - Max	48'
Inlet - Size / Thread	1-1/4" NPT (BSPT available)
Anti-siphon valve	1/4" NPT
Outlet - Size / Thread	1" NPT (BSPP available)
Mount	Cast Iron
Material - Pump Housing	Cast Iron
Material - Wetted Material	BUNA-N + Fluorocarbon
Rotor Material	Powdered Iron
Rotor Vane Material	Acetal
Compatible Fluids	Diesel, Gasoline, Bio-Diesel up to B20, E15, Kerosene
Strainer Mesh Size	20 x 20
Warranty	2 Years

### SERVICE KIT INFORMATION

Kit	Description	Parts
KIT321RK	Overhaul Kit	Rotor, rotor cover, vanes, o-ring seal, shaft seal kit, bypass valve, inlet seal & screen, rotor key, attaching hardware
KIT321RG	Rotary Group	Rotor, vanes, rotor key, gasket, rotor cover, screws
KIT320SL	Shaft Seal	8 piece assembly
KIT321BV	Bypass Kit	Poppet, spring, o-ring, cap
KIT321NB	Boot Kit	Nozzle boot, attaching hardware
KIT321SK	External Seal Kit	Rotor cover o-ring seal, inlet gasket, screen
KIT321BG	Inlet Kit	Inlet bung adapter, attaching hardware, inlet screen, seal
KIT321SW	Switch / Breaker	Switch Assembly
KIT321PC	Power Cord	20' Power cord with threaded sleeve attachment and o-ring seals
KIT321FLG	Meter Flange Kit	900CD Meter Flange, attaching hardware

\*Adding accessories will affect flow rate

## DIMENSIONAL INFORMATION



All measurements are in inches (millimeters).

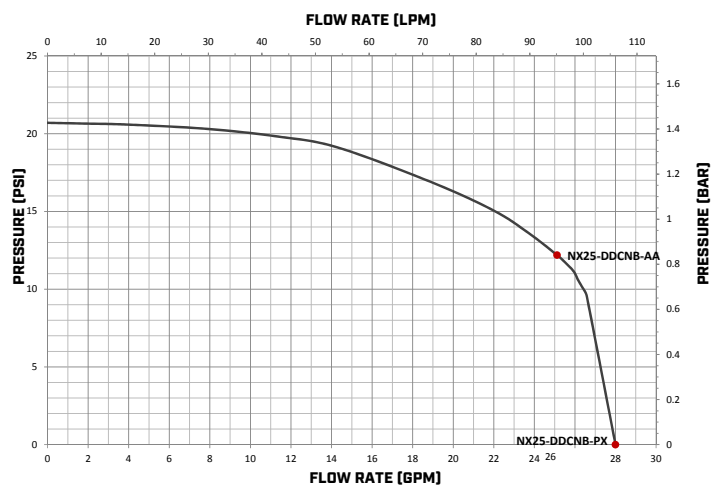
### Measurements

Overall Height	6.3"
Overall Width	9.3"
Overall Depth	8.6"
Intake Center Line to Back of Nozzle Boot	10.6"
Shipping Weight	26 lbs
Qty per Pallet	16
Box Dimensions (LxWxH)	18" x 15.5" x 10"

### Included Accessories

Nozzle - Size	1" NPT-F inlet, 1-1/8" OD spout
Nozzle	Automatic Ultra Hi-Flow
Hose Diameter	1"
Hose Length	18'
Hose Material of Construction	Neoprene exterior
Hose Static Wire (Yes/No)	Yes
Certifications	UL/cUL Listed, ATEX, IECEx, CE

### PERFORMANCE CURVE: NX25-DDC SERIES



NX25-DDC Pump Models