

**FILL-RITE** DEF



*FROM THE LEADER IN FUEL TRANSFER*

***DEF / ADBLUE® PUMP  
SYSTEMS & ACCESSORIES***

**GR**  
GORMAN-RUPP  
COMPANY



## ***DF SERIES | DEF DISPENSING PUMP SYSTEMS***

The new DF Series DEF pumps and systems from Fill-Rite provide quick, easy, and safe dispensing. With 8 GPM flow rates, your choice of AC or DC power, and all-in-one systems ready to go right out of the box, pumping Diesel Exhaust Fluid has never been easier.

Whether you pump from an IBC, tote, or drum, there is a DF series system for you. Options include mounting brackets, hoses, fittings, and nozzles with digital meters pre-attached at the factory. Best of all, it comes from Fill-Rite, so you know it is built for performance and durability. Take control of your DEF use; choose a DF Series system from Fill-Rite, the most trusted name in pumps and meters.

**120V AC**  
**DF120N**



	DF120N	DF012N
FLOW RATE	8 GPM / 30 LPM	
MAX. BYPASS	38 psi / 2.6 bar	
VOLTAGE	120V AC	12V DC
WETTED CONSTRUCTION	Nylon, EPDM, Santoprene®, Stainless Steel	
DUTY CYCLE	30 Min. ON / 30 Min. OFF	
COMPATIBLE FLUIDS	Water, Diesel Exhaust Fluid	
INLET / OUTLET	1" BSPP	
CONNECTIONS KIT (INCLUDED)	(2) 1" BSPP x 3/4" hose barb 90° elbows, (2) 1" BSPP x 3/4" hose barb straight fittings, (4) Worm gear hose clamps	

**12V DC**  
**DF012N**



## PUMP FEATURES & BENEFITS

- Rugged Multi-Diaphragm Technology**  
Specifically designed for DEF / AdBlue® dispensing
- Integral Pulsation Dampener**  
Smooth flow at point of use
- 30-Minute Duty Cycle**  
120V AC or 12V DC
- Self-Priming to 6 Feet**  
Saves time with quick fluid lift
- 8 GPM Flow Rate**  
Ideal dispense rate for most tank sizes
- EPDM Seals**  
Designed, tested and proven specifically for DEF
- Stainless Steel Exterior Hardware**  
Ideal material for DEF / AdBlue®

**FILL-RITE DEF**

## DRUM MOUNT SYSTEM

# 120V AC SYSTEMS

	DF120CAT520	DF120CAN520-RP	DF120CAN520	DF120CMN520	DF120DAN520
<b>Pump Voltage</b>	120V AC	120V AC	120V AC	120V AC	120V AC
<b>Bracket Type</b>	Cage IBC	Cage IBC	Cage IBC	Cage IBC	Drum
<b>Nozzle Boot &amp; Bracket</b>	Included	Included	Included	Included	Included
<b>Turbine Meter</b>	TT10PB	-	-	-	-
<b>Nozzle Type</b>	Automatic	Automatic	Automatic	Manual	Automatic
<b>Micro Matic® RPV</b>	Included	Included	-	-	-
<b>5' Suction Hose</b>	Included	Included	Included	Included	Included
<b>20' Discharge Hose</b>	Included	Included	Included	Included	Included
<b>Connections</b>	(2) 1" BSPP x 3/4" hose barb 90° elbows, (2) 1" BSPP x 3/4" hose barb straight fittings, (4) Worm gear hose clamps				



Auto Nozzle AC System, In-line Meter, RPV



Automatic Nozzle AC System, RPV



Automatic Nozzle AC System



Manual Nozzle AC System



Drum Mount AC System, Auto Nozzle

## SYSTEM COMPONENT DETAILS

### CAGE BRACKET

- Stainless steel
- Hangs on many types of caged totes
- High capacity hose bracket accommodates 20'

### DRUM BRACKET (DF120DAN520 only)

- Stainless steel
- Securely mounts to 30 and 55-gallon drums

### NOZZLE BOOT

- Keeps nozzle clean and free of debris
- Nozzle tip submerged in water stays clean
- Removable boot for easy clean-up
- Multiple secure mounting configurations



# 12V DC SYSTEMS

	DF012CAT520	DF012CAN520-RP	DF012CAN520	DF012CMN520
<b>Pump Voltage</b>	12V DC	12V DC	12V DC	12V DC
<b>Bracket Type</b>	Cage IBC	Cage IBC	Cage IBC	Cage IBC
<b>Nozzle Boot &amp; Bracket</b>	Included	Included	Included	Included
<b>Turbine Meter</b>	TT10PB			-
<b>Nozzle Type</b>	Automatic	Automatic	Automatic	Manual
<b>Micro Matic® RPV</b>	Included	-	Included	-
<b>5' Suction Hose</b>	Included	Included	Included	Included
<b>20' Discharge Hose</b>	Included	Included	Included	Included
<b>Connections</b>	(2) 1" BSPP x 3/4" hose barb 90° elbows, (2) 1" BSPP x 3/4" hose barb straight fittings, (4) Worm gear hose clamps			



Auto Nozzle DC System, In-line Meter, RPV



Automatic Nozzle DC System, RPV



Automatic Nozzle DC System



Manual Nozzle DC System

#### HOSE

- 3/4" EPDM DEF rated

#### Nozzle

- Automatic or manual

#### TURBINE METER (CAT520 models only)

- +/- 1% accuracy
- 4-Digit display: ounces, pints, quarts, liters or gallons
- Factory calibrated, installed and tested
- Easy field calibration
- Replaceable AA batteries

#### MICRO MATIC® COMPOSITE DISPENSE COUPLER (RPV)

- (CAT520 and CAN520-RP models only)
- Dispense from drum or IBC
- For use with either RSV or RPV 4-Key Container Valve
- Fast "Turn, Click and Go" connections
- Self-locking handle eliminates accidental disengagement
- Protects fluid purity by allowing dispense only

## DF SERIES | DEF ACCESSORIES



### FRDFA075A

- Automatic DEF nozzle
- Stainless Steel
- 3/4" BSPP connection



### KITDFMN

- DEF Automatic metering nozzle
- In-line turbine meter
- 3/4" SS Hose barb connection w/ swivel



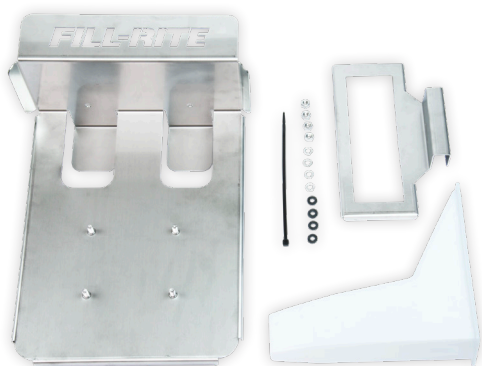
### FRDFM075C

- Manual DEF nozzle
- Non-metallic
- 3/4" Hose barb connection



### FRDFM075B

- Automatic DEF nozzle
- Non-metallic
- 3/4" SS Hose barb connection w/ swivel



### KITDFCB

- FILL-RITE IBC/Tote bracket
- Stainless Steel construction including hardware
- Includes nozzle boot and reservoir



### KITDFDB

- FILL-RITE Drum bracket
- Stainless Steel construction expands for 30 to 55 gallon drums
- Includes nozzle boot and bracket



### KITDFNB

- Nozzle boot and bracket
- Removable boot for easy clean-up
- Keeps nozzle clean and free of debris



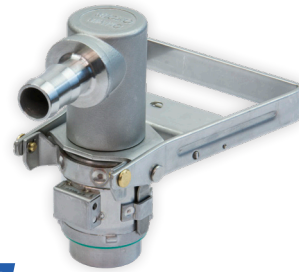
### MMSS075EPV

- Micro Matic® Stainless Steel, EPV coupler
- 3/4" Horizontal hose barb connection
- For use with 3-key EPV container valves



### MMNM075RPV

- Micro Matic® Non-metallic, RPV coupler
- 3/4" Horizontal hose barb connection
- For use with either RSV or RPV 4-key container valves



### MMSS075RSV

- Micro Matic® Stainless Steel, RSV coupler
- 3/4" Horizontal hose barb connection
- For use with either RSV or RPV 4-key container valves



### KIT180DTPS

- 55 Gallon drum drop tube
- 3/4" Horizontal hose barb connection
- Vented system



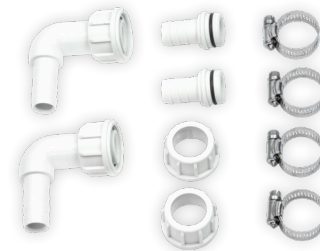
### KITDFH20

- 20' EPDM suction hose 3/4 inch
- Bare ends for hose barb connection
- DEF rated



### KITDFH05

- 5' EPDM suction hose 3/4 inch
- Bare ends for hose barb connection
- DEF rated



### KITDFFK

- (2) 1" BSPP x 3/4" Hose Barb strait fittings with retaining nuts
- (2) 1" BSPP x 3/4" Hose Barb 90-degree elbow fittings with retaining nuts
- (4) SS worm gear hose clamps



# **FILL-RITE** DEF

FRDESv.1

8825 Aviation Drive  
Fort Wayne, Indiana 46809  
(800) 720-5192

[FILLRITE.COM](http://FILLRITE.COM)

**GR**  
GORMAN-RUPP  
COMPANY